

SUBMITTAL/TECHNICAL DATA SHEET



SPECIFICATIONS

MATERIAL:
UL-SEE: 16 gauge galvanized steel
UL-SEEA: .090 aluminum

FINISH:
Galvanized Steel: Mill Finish
Aluminum: Mill Finish

COVER:
Damage resistance, light admitting,
1/8" polycarbonate outer dome with
1/8" polycarbonate inner dome,
surrounded by an extruded aluminum
frame.

CURB:
13 1/2" in height with 3 1/2" pre-drilled
mounting flanges and counterflashing
with 1" thick exterior fiberboard
insulation

GASKET:
Polyurethane Foam Gasket adhered to
the entire perimeter of curb

HINGES:
Steel Pintle Hinge

SPRINGS:
Torsion Coil Spring operators to open
against a 10 psf snow or wind load

DAMPENERS:
Hydraulic dampeners to control cover
opening speed and prevent over-travel

LATCHES:
Latch designed to open automatically
with parting of single 360 degree
fusible link or manually with interior
and exterior pull release handles
without disturbing the fusible link.
Designed to hold covers closed when
subjected to 30 psf uplift pressure

HARDWARE:
All hardware is zinc plated (stainless
steel hardware optional)

SKU: **3541 848 9A**
**SKY FLAT PANEL
SMOKE VENT**

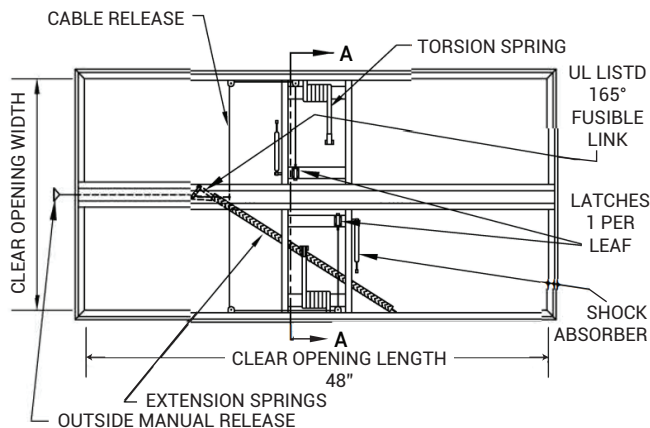


DIMENSIONS AND APPEARANCE

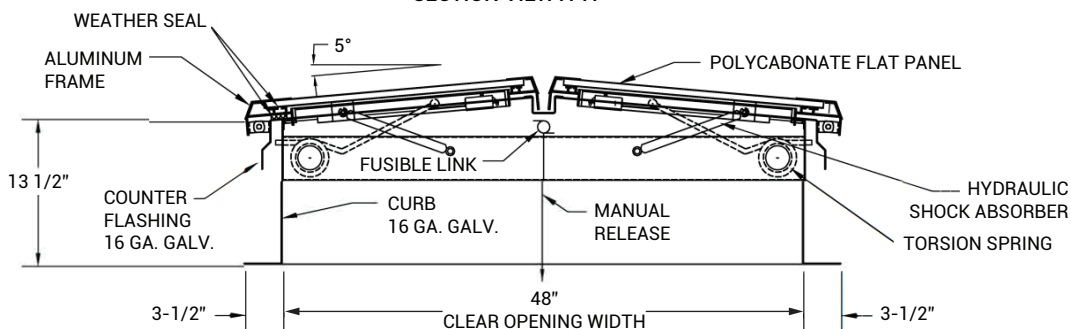
>> CLICK TO VIEW ADDITIONAL DETAILS AND PRICING <<

MODEL	INSIDE CURB DIM.		UL	FM
	WIDTH	LENGTH		
UL-SKY 4848	48"	48"	x	x
UL-SKY 4860	48"	60"	x	x
UL-SKY 4872	48"	72"	x	x
UL-SKY 4884	48"	84"	x	x
UL-SKY 4896	48"	96"	x	x

NOTES:
* LISTED BY UNDERWRITERS' LABORATORIES
* APPROVED BY FACTORY MUTUAL
(SNOW RATE 10 PSF)



SECTION VIEW A-A



For a complete list of options visit
www.AccessDoorsAndPanels.com

PROJECT DATA

Custom Sizes Available - Fast!

PROJECT NAME :	QTY	W	H	OPTIONS
ARCHITECT :				
DEALER :				
CONTRACTOR :				
LOCATION :	SPECIAL INSTRUCTIONS :			
DATE :	SUBMITTAL APPROVAL : (signature or stamp)			
TAGGING INSTRUCTIONS :				

Scan or Click



To view Pricing and
Additional Product Info.

TELEPHONE:
1-888-457-1275
FAX:
1-888-626-2907



PO BOX 66738 #76520,
SAINT LOUIS, MO
63166-6738
USA



WEBSITE:
www.AccessDoorsAndPanels.com
E-MAIL:
info@accessdoorsandpanels.com